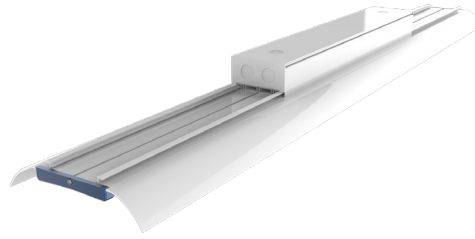
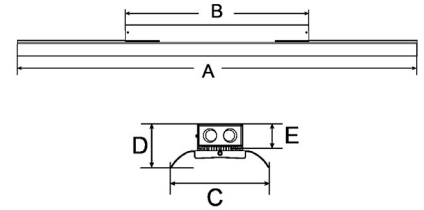


LITE SKY Linear High Bay

LED Linear high bay fixtures can be used in dozens of different spaces: warehouses, transportation facilities, cafeterias and manufacturing buildings, to name just a few. Lite Sky provides the versatility that you need. Suitable for installation heights of 15 to 45 feet, in four power levels from 80W to 150W and with three available beam angles, individual Lite Sky fixtures can be linked together either tip-to-tail or side-by-side.



DIMENSIONS



Size A (in)	Size B (in)	Size C (in)	Size D (in)	Size E (in)
48.00"	21.65"	7.32"	3.27"	2.00"

APPLICATIONS

Commercial, Industrial

MODEL OPTIONS

Manufacturer	Fixture Type	Wattage	Voltage	Name	Driver	Chip	CCT (X)	Beam Angle (Y)
BSL BIG SHINE LED	HBL Linear High Bay	150W	100-277V G-347-480V Optional	LSK	FA Fahold	JF Jufei	3000K, 4000K, 5000K	60°, 90°, 120°

TECHNICAL SPECIFICATIONS

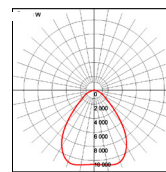
	150W
Lumens	19,500
Efficacy	130
CRI	80 (5000K)
Voltage Input	100-277V
Voltage Output	32-58V
Amperage	2.0
Hertz	50-60 Hz
THD	<20%
Control Options	0-10V Optional (T)
Operating Temp.	-4°~122°F
IP Rating	IP40
IK Level	IK06
Weight	9.92 lb
Driver Life	50,000 hrs
L70 Results ¹	50,000 hrs

¹ LM80 and TM21 results are available upon request. Specifications are subject to change without notice.

FIELD & BEAM ANGLES

MODEL	Beam	Height vs. Illuminance (ft vs. lx)		
	Angle	9.8 ft	19.7 ft	29.5 ft
BSL-HBL150-LSK-FAJF-5000K-90	90	1,170.8	292.7	131.0

PHOTOMETRICS

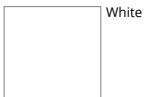


150W-5000K-90°

MOUNTING OPTIONS

Suspended

STANDARD COLOR OPTIONS



White

